



Gosford Road | | Beccles | NR34 9QU

Asking Price £220,000

DURRANTS
SINCE 1853

Key features

- Mid terrace property
- Town centre location
- Off road parking
- Two bedrooms
- Enclosed rear gardens
- NO ONWARD CHAIN!

Description

****NO ONWARD CHAIN!****

This attractively designed cottage-style modern home is ideally positioned within easy reach of Beccles town centre, offering well-proportioned accommodation and the convenience of off-road parking.

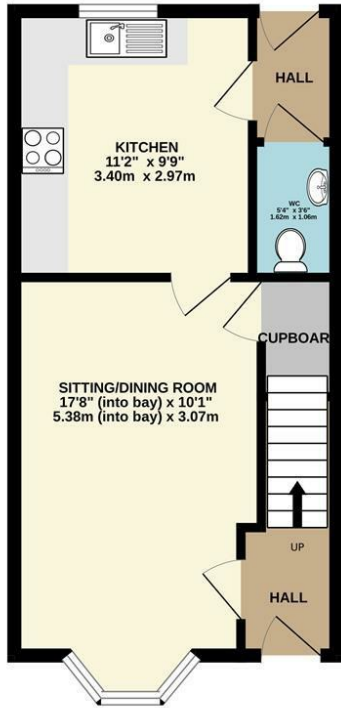
Directions



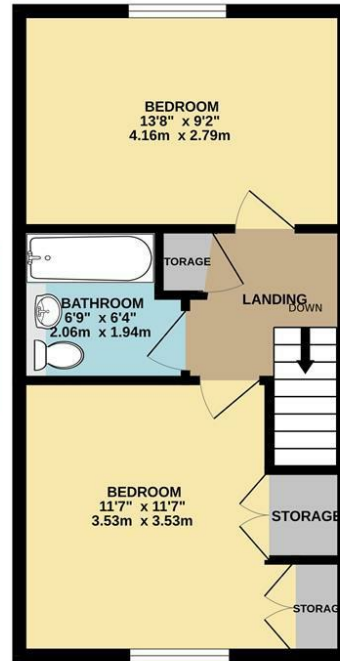


Floor plans

GROUND FLOOR
374 sq.ft. (34.7 sq.m.) approx.



1ST FLOOR
370 sq.ft. (34.4 sq.m.) approx.



TOTAL FLOOR AREA: 744 sq.ft. (69.1 sq.m.) approx.

Whilst every attempt has been made to ensure the accuracy of the floorplan contained here, measurements of doors, windows, rooms and any other items are approximate and no responsibility is taken for any error, omission or mis-statement. This plan is for illustrative purposes only and should be used as such by any prospective purchaser. The services, systems and appliances shown have not been tested and no guarantee as to their operability or efficiency can be given.
Made with Metropix ©2025

Energy Efficiency Rating		
	Current	Potential
Very energy efficient - lower running costs		
(92 plus) A		
(81-91) B		
(69-80) C		
(55-68) D		
(39-54) E		
(21-38) F		
(1-20) G		
Not energy efficient - higher running costs		
England & Wales	EU Directive 2002/91/EC	



10 New Market
Beccles
Suffolk
NR34 9HA
01502 712122

infobeccles@durrants.com
<https://durrants.com/>