



Holton Road | | Halesworth | IP19 8HQ

£700 PCM

DURRANTS
SINCE 1853

Key features

- Good Location
- Gas Central Heating
- Double Glazing
- Garage and Parking Space
- Ground Floor
- Bedroom with Built in Wardrobe
- Shower Room

Description

Within walking distance of the town centre this one bedroom ground floor apartment offers well proportioned accommodation on one level, ideal for single or couple occupancy. In addition to the bedroom there is a lounge, kitchen, shower room, gas central heating, double glazing and a garage.

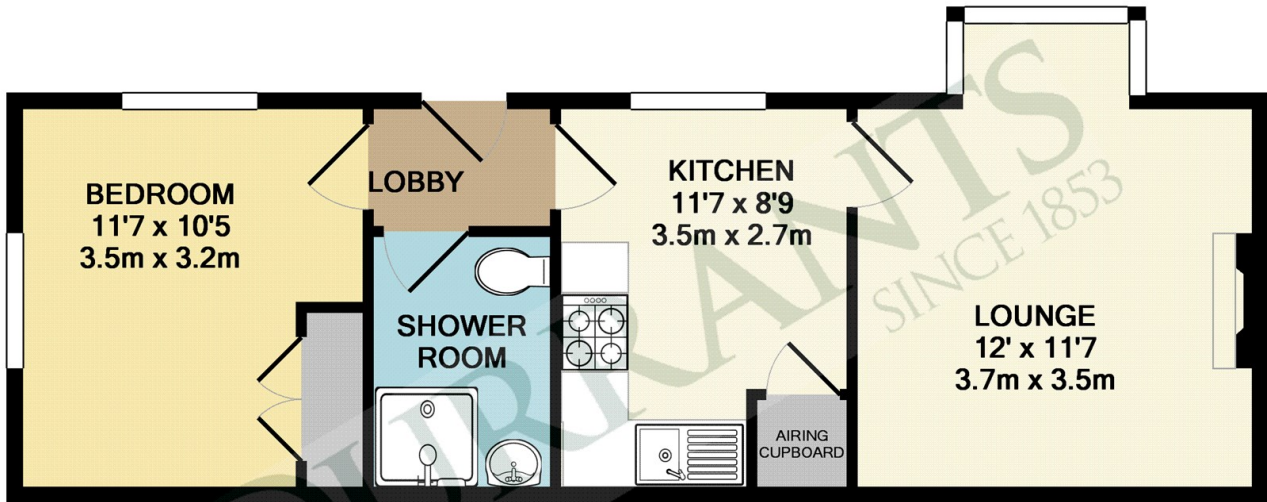
Directions

From the town centre take Quay Street, continue under the viaduct, Albany Court will then be found on the right hand side after approx. 100 metres.





Floor plans



TOTAL APPROX. FLOOR AREA 438 SQ.FT. (40.7 SQ.M.)

Whilst every attempt has been made to ensure the accuracy of the floor plan contained here, measurements of doors, windows, rooms and any other items are approximate and no responsibility is taken for any error, omission, or mis-statement. This plan is for illustrative purposes only and should be used as such by any prospective purchaser. The services, systems and appliances shown have not been tested and no guarantee as to their operability or efficiency can be given

Made with Metropix ©2014

Energy Efficiency Rating		
	Current	Potential
Very energy efficient - lower running costs		
(92 plus) A		
(81-91) B		
(69-80) C		
(55-68) D	66	72
(39-54) E		
(21-38) F		
(1-20) G		
Not energy efficient - higher running costs		
England & Wales	EU Directive 2002/91/EC	



12 Thoroughfare
Halesworth
Suffolk
IP19 8AH

01986 872553

halesworth@durrants.com

<https://durrants.com/>