



## Nyanza Cottage

Chediston Street | | Halesworth | IP19 8BE

Guide Price £190,000

**DURRANTS**  
SINCE 1853

## Key features

- Ready to move straight in to
- One bedroom Georgian cottage
- Desirable town centre location, with endless character
- Permit parking available at the property
- Small courtyard garden
- Recently modernised and the perfect first home
- Annexe potential within the rear outbuilding (stp)
- A short drive from Suffolks coast Line
- Situated in the centre of Halesworth

## Description

This charming Georgian cottage situated in the centre of Halesworth presenting well with potential annex space (stp) along with permit parking. This is one to view!

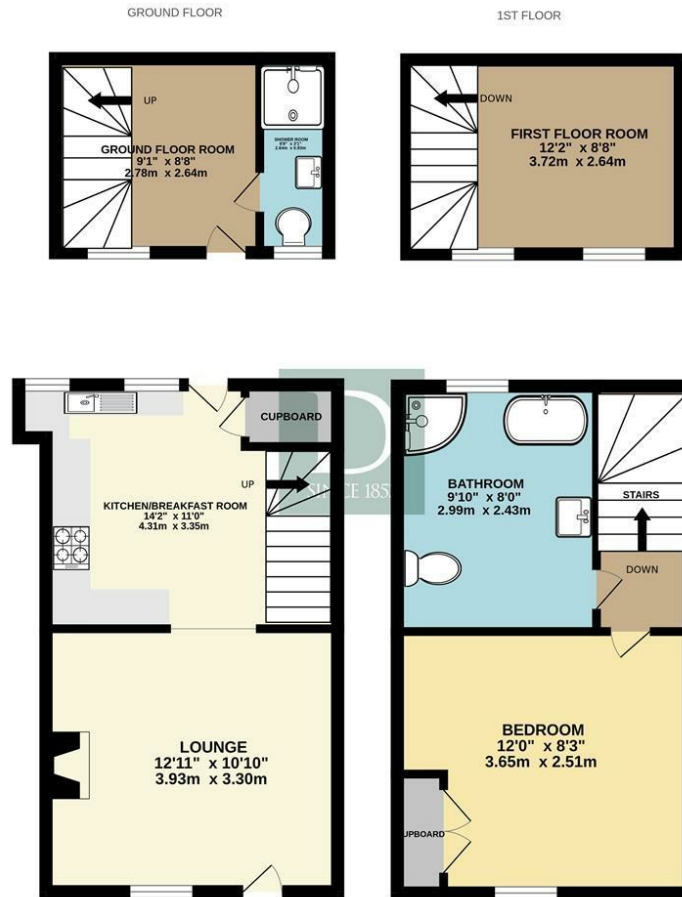


## Directions

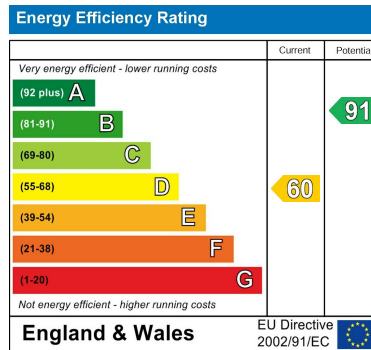




# Floor plans



Whilst every attempt has been made to ensure the accuracy of the floorplan contained here, measurements of doors, windows, rooms and any other items are approximate and no responsibility is taken for any error, omission or mis-statement. This plan is for illustrative purposes only and should be used as such by any prospective purchaser. The services, systems and appliances shown have not been tested and no guarantee as to their operability or efficiency can be given.  
Made with Metropix ©2026



12 Thoroughfare  
Halesworth  
Suffolk  
IP19 8AH  
01986 872553  
halesworth@durrants.com  
<https://durrants.com/>