



# PENNY'S

FERRY ROAD WALBERSWICK, SOUTHOLD, IP18 6TN

Residents

Parking

# A fabulous Cottage situated in the popular village of Walberswick, offering a great location

**Situated on Ferry Road in the sought-after village of Walberswick, this charming two-bedroom semi-detached cottage offers a well-designed, versatile layout, perfect as a full-time home or coastal getaway.**

The ground floor is entered via a central hallway, which provides access to the principal rooms of the home. To the front, a comfortable reception room offers a cosy setting, while a second reception room to the rear provides additional living or dining space, creating a flexible space for entertaining or relaxing. A country style kitchen is conveniently positioned off the hallway and is well-proportioned for everyday use. Also on the ground floor is a bedroom, offering versatility as guest accommodation, a study, or for those seeking single-level living, along with a nearby cloakroom.

Upstairs, the first floor offers a further principal bedroom and is also completed with a family bathroom. To the rear of the home is a good size landscaped rear garden with studio room with services

connected.

Occupying a popular position within Walberswick, the property benefits from close proximity to the village's renowned coastline, heathland walks, and local amenities. This appealing home offers an excellent opportunity to acquire a characterful property in one of Suffolk's most picturesque coastal locations.

## TENURE

Freehold

## SERVICES

Mains services connected (Durrants has not tested any apparatus, equipment, fittings or services and so cannot verify they are in working order.)

## LOCAL AUTHORITY

East Suffolk Council. Band C

## VIEWINGS

Strictly by appointment with the agent's Southwold Office.

## EPC- TBC

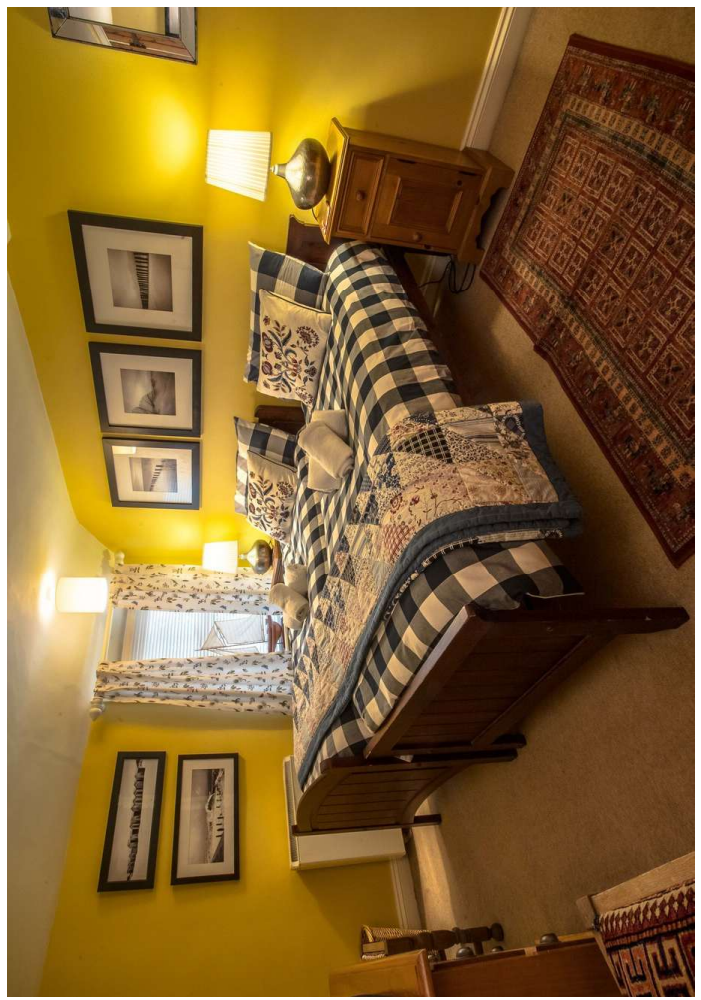


1

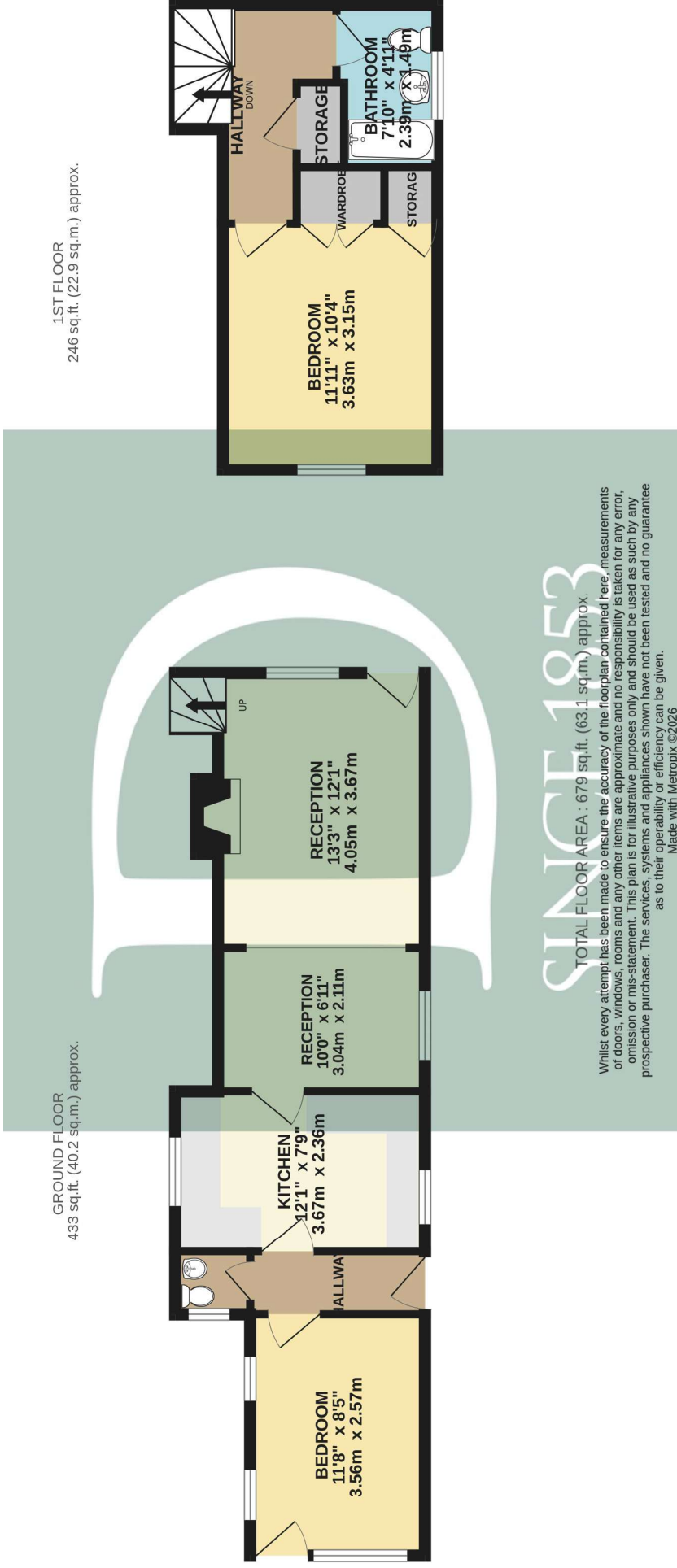
2

2

GARDEN STUDIO



## FLOOR PLAN



## Residential Agricultural Commercial On Site Auctions Property Management Building Consultancy Auction Rooms Holiday Cottages

### IMPORTANT NOTICE

#### Durrants and their clients give notice that:

1. They are not authorised to make or give any representations or warranties in relation to the property either here or elsewhere, either on their own behalf or on behalf of their client or otherwise. They assume no responsibility for any statement that may be made in these particulars. These particulars do not form part of any offer or contract and must not be relied upon as statements or representations of fact.
2. Any areas, measurements or distances are approximate. The text, photographs and plans are for guidance only and are not necessarily comprehensive. It should not be assumed that the property has all necessary planning, building regulation or other consents. Durrants have not tested any services, equipment or facilities. Purchasers must satisfy themselves by inspection or otherwise.

### CONTACT US

Durrants, 98 High Street, Southwold,  
Suffolk, IP18 6DP

Tel : **01502 723292**

Email : [southwold@durrants.com](mailto:southwold@durrants.com)

