



22A COVERT ROAD

REYDON, IP18 6QF

22a Covert Road is a stunning modern home, positioned in the popular coastal village of Reydon and offers no onward chain



Situated in the popular village of Reydon, this well-proportioned four-bedroom end of terraced home offers versatile accommodation, ideal for families or those seeking flexible living space.

The property is entered via a hallway which leads through to a ground floor double bedroom, complete with its own en-suite bathroom with shower, providing an ideal master bedroom or guest suite. Great for future proofing. Situated beyond this is a separate shower room with basin and toilet. There is then a further double bedroom.

There is a generously sized kitchen, offering ample workspace and provides direct access into the side garden, ideal for alfresco dining. To the rear of the property, a spacious reception room with door into the rear garden, creating a bright and inviting living area with room for both dining and relaxation, and featuring stairs rising to a mezzanine level which could be used as a study or play area.

The first floor comprises two further bedrooms, both well-sized and arranged off a central landing. In

total, the property offers approximately 1,374 sq ft of accommodation, thoughtfully laid out to maximise space and functionality. This charming home is well-suited to a variety of buyers and benefits from its convenient location within easy reach of Reydon's local amenities and the nearby coastal town of Southwold.

Located in Reydon, which provides a number of shops, public house and medical centre, with the coastal town of Southwold, a short walk away, offering an abundance of local shops, restaurants and coastal attraction.

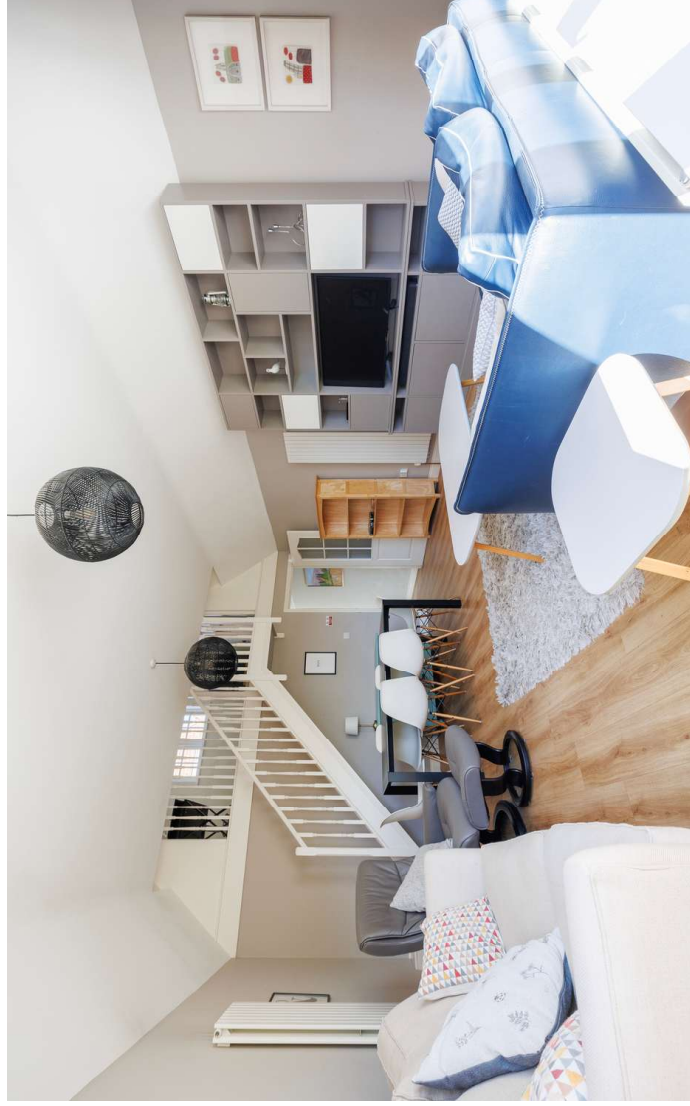
TENURE-
freehold

LOCAL AUTHORITY-
East Suffolk Council. Band D

VIEWING-
Strictly by appointment with the agent's Southwold Office.

EPC- D
SERVICES-

Mains services are connected. (Durrants has not tested any



NO ONWARD
CHAIN

