



High Street | | Southwold | IP18 6AE

£895

DURRANTS
SINCE 1853

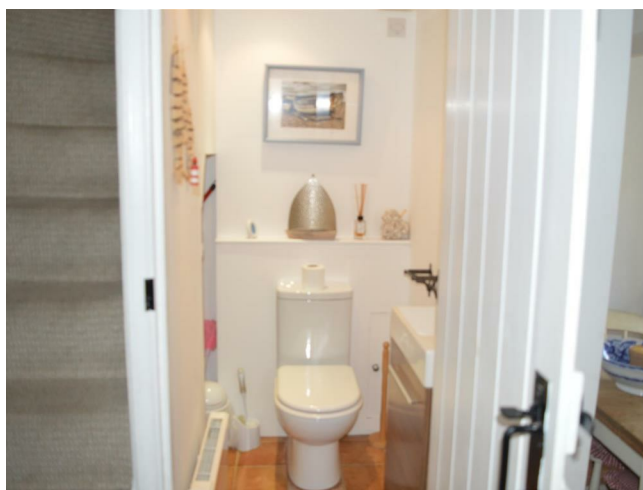
Key features



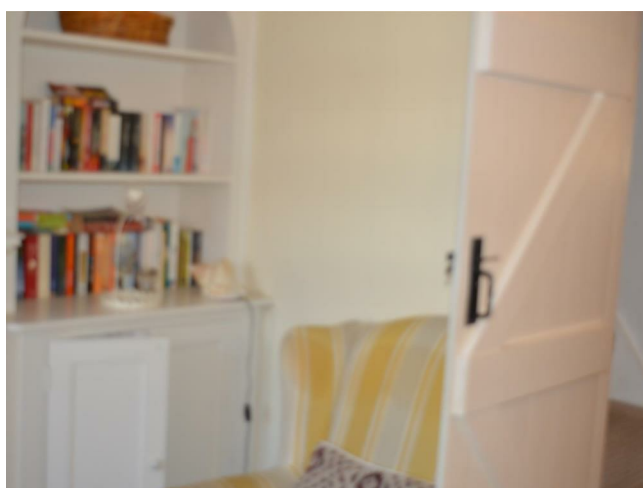
Description

Nestled in the charming coastal town of Southwold, this delightful terrace house on High Street offers a perfect blend of comfort and convenience. With two inviting reception rooms, this property provides ample space for relaxation and entertaining. The well-proportioned layout includes two cosy bedrooms, ideal for a small family.

The house features a thoughtfully designed bathroom, ensuring that all your daily needs are met with ease. The location is particularly appealing, as it places you within easy reach of Southwold's stunning beaches, vibrant shops, and local amenities, making it an ideal spot for those who appreciate the beauty of seaside living.



Directions

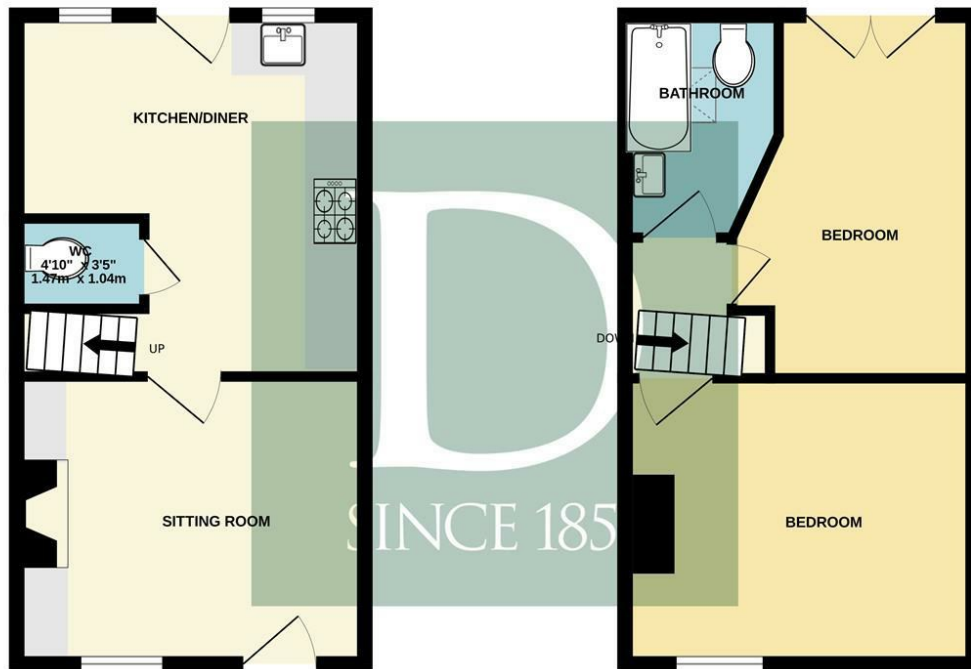




Floor plans

GROUND FLOOR

1ST FLOOR



Whilst every attempt has been made to ensure the accuracy of the floorplan contained here, measurements of doors, windows, rooms and any other items are approximate and no responsibility is taken for any error, omission or mis-statement. This plan is for illustrative purposes only and should be used as such by any prospective purchaser. The services, systems and appliances shown have not been tested and no guarantee as to their operability or efficiency can be given.
Made with Metropix ©2026

Energy Efficiency Rating		
	Current	Potential
Very energy efficient - lower running costs		
(92 plus) A		
(81-91) B		
(69-80) C		
(55-68) D		
(39-54) E		
(21-38) F		
(1-20) G		
Not energy efficient - higher running costs		
England & Wales	EU Directive 2002/91/EC	



98 High Street
Southwold
Suffolk
IP18 6DP
01502 723292
southwold@durrants.com
<https://durrants.com/>