



Lansbury Road | Halesworth | | IP19 8SA

Offers In Excess Of £250,000

DURRANTS
SINCE 1853

Key features

- Walking distance to Halesworth Town Centre
- Semi-detached house
- Three bedrooms and one family bathroom
- Parking available to the side of the property
- Vendors have found
- Air conditioning unit in main bedroom
- Ample storage space
- Generous size sitting room that leads through to the conservatory
- Recently modernised kitchen with integrated appliances
- Immaculate garden with good size shed/workshop

Description

Located in Halesworth Town Centre, this semi-detached house offers three bedrooms, a bathroom, well maintained gardens and off road parking is available next to the property!

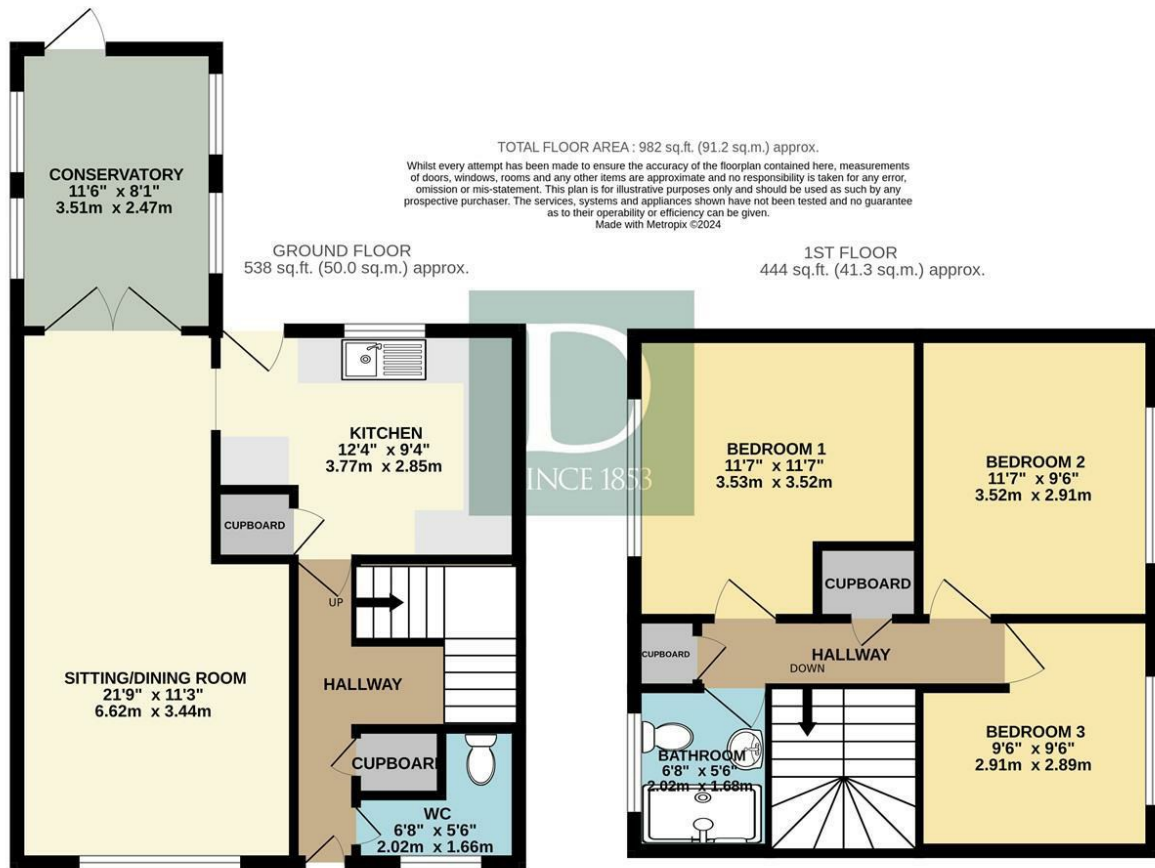


Directions





Floor plans



| Energy Efficiency Rating | | |
|--|----------------------------|-----------|
| | Current | Potential |
| <i>Very energy efficient - lower running costs</i> | | |
| (92 plus) A | | |
| (81-91) B | | |
| (69-80) C | | |
| (55-68) D | | |
| (39-54) E | | |
| (21-38) F | | |
| (1-20) G | | |
| <i>Not energy efficient - higher running costs</i> | | |
| England & Wales | EU Directive 2002/91/EC | |



12 Thoroughfare
Halesworth
Suffolk
IP19 8AH
01986 872553

halesworth@durrants.com
<https://durrants.com/>