



Lansbury Road | Halesworth | | IP19 8SA

Offers In Excess Of £250,000

DURRANTS
SINCE 1853

Key features

- Walking distance to Halesworth Town Centre
- Semi-detached house
- Three bedrooms and one family bathroom
- Parking available to the side of the property
- VIEWING IS ADVISED
- Air conditioning unit in main bedroom
- Ample storage space
- Generous size sitting room that leads through to the conservatory
- Recently modernised kitchen with integrated appliances
- Immaculate garden with good size shed/workshop

Description

Located in Halesworth Town Centre, this semi-detached house offers three bedrooms, a bathroom, well maintained gardens and off road parking is available next to the property!

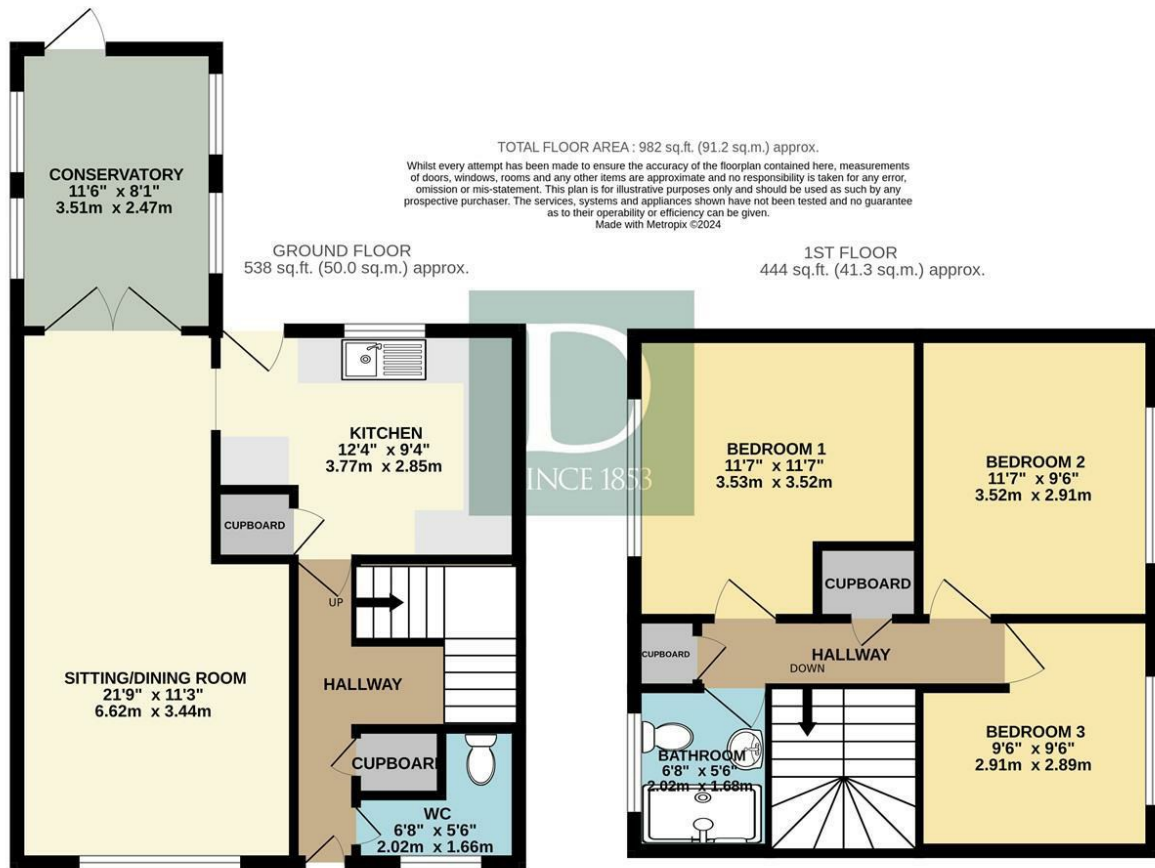


Directions





Floor plans



Energy Efficiency Rating		
	Current	Potential
<i>Very energy efficient - lower running costs</i>		
(92 plus) A		
(81-91) B		
(69-80) C		
(55-68) D		
(39-54) E		
(21-38) F		
(1-20) G		
<i>Not energy efficient - higher running costs</i>		
England & Wales	EU Directive 2002/91/EC	



12 Thoroughfare
Halesworth
Suffolk
IP19 8AH
01986 872553

halesworth@durrants.com
<https://durrants.com/>