



Flat 3

Buckenham Court | | Southwold | IP18 6JT

£1,795 PCM

DURRANTS
SINCE 1853

Key features

- Central Location
- Light & Airy Accommodation
- Spacious Rooms
- Balcony
- Two Bathrooms
- Communal Garden
- Garage and parking for 1 car
- Tucked away just off Southwold High Street

Description

Nestled in the heart of Southwold, this charming three-bedroom, two-bathroom apartment at Buckenham Court offers a delightful blend of comfort and convenience. Built between 1980 and 1989, this spacious residence is perfect for those seeking a modern lifestyle in a picturesque coastal town.

Upon entering, you will be greeted by spacious reception rooms, providing ample space for relaxation and entertaining. The well-appointed bedrooms are designed to offer a peaceful retreat, while the two bathrooms ensure that family and guests alike can enjoy privacy and comfort.

One of the standout features of this property is the availability of both a garage and private parking for two vehicles, a rare find in such a central location. Just a minute's stroll from the bustling High Street, residents will have easy access to a variety of shops, cafes, and local amenities, making everyday life both convenient and enjoyable.

This apartment is an ideal choice for families, couples, or anyone looking to embrace the vibrant lifestyle that Southwold has to offer. With its prime location and spacious layout, this property presents a wonderful opportunity to make a home in one of Suffolk's most sought-after coastal towns. Don't miss the chance to experience the charm and convenience of this delightful apartment.

Directions

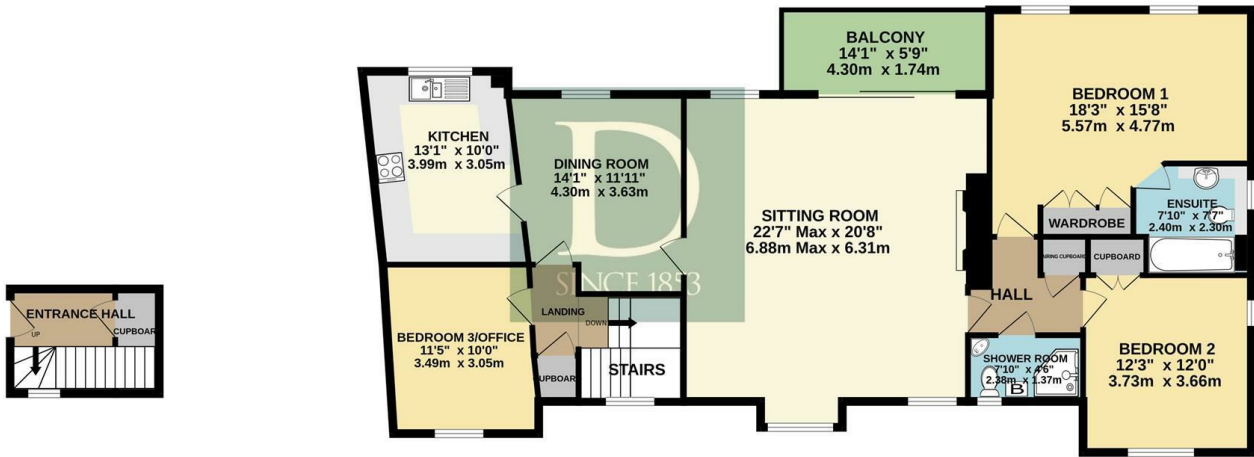




Floor plans

GROUND FLOOR
72 sq.ft. (6.7 sq.m.) approx.

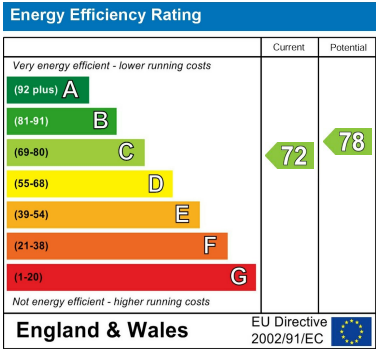
1ST FLOOR
1397 sq.ft. (129.8 sq.m.) approx.



TOTAL FLOOR AREA : 1469 sq.ft. (136.5 sq.m.) approx.

Whilst every attempt has been made to ensure the accuracy of the floorplan contained here, measurements of doors, windows, rooms and any other items are approximate and no responsibility is taken for any error, omission or mis-statement. This plan is for illustrative purposes only and should be used as such by any prospective purchaser. The services, systems and appliances shown have not been tested and no guarantee as to their operability or efficiency can be given.

Made with Metropix ©2023



98 High Street
Southwold
Suffolk
IP18 6DP
01502 723292
southwold@durrants.com
<https://durrants.com/>