



Pineview

Caldecott | Fritton | Great Yarmouth | NR31 9EY

Offers In Excess Of £212,000

DURRANTS
SINCE 1853

Key features

- A Stunning Scandinavian-Style Lodge with Golf Course Views
- Nestled within the exclusive gated community of Fairway Lakes Village
- Uninterrupted views across the rolling fairways and countryside.
- Terrace with hot tub
- Two double bedrooms
- Well presented throughout
- Parking for two cars
- Fairway Lakes has access for golf membership, spa and swimming pool, restaurant (all charged locally)
- INCOME POTENTIAL!
- Viewing a must to appreciate

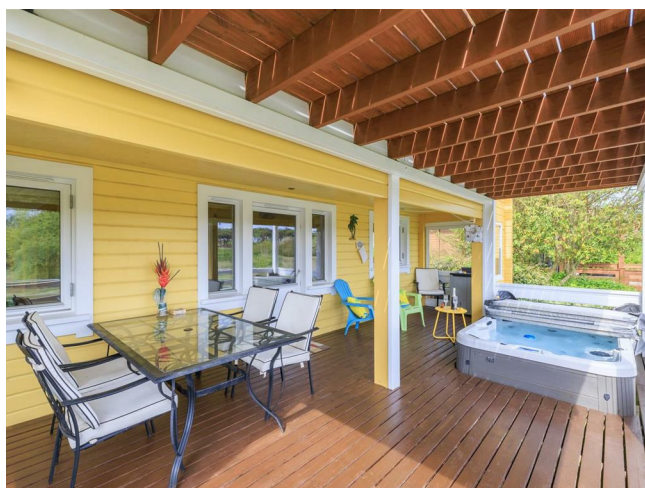
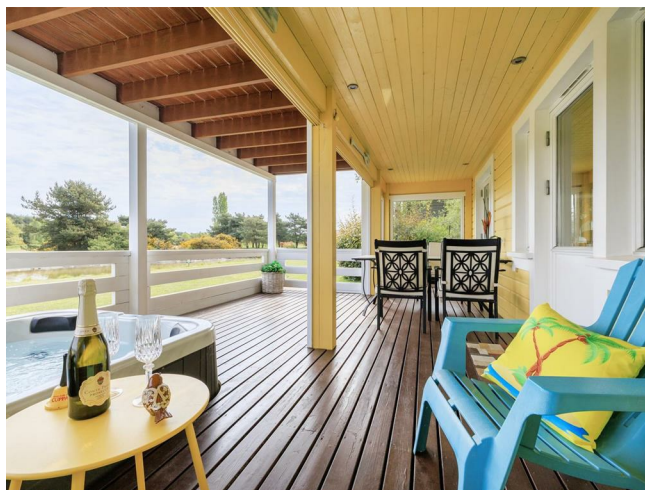
Description

A Stunning Scandinavian-Style Lodge with Golf Course Views

Nestled within the exclusive gated community of Fairway Lakes Village, Pineview offers a rare opportunity to own a beautifully presented two-bedroom Scandinavian-style lodge

Pineview offers uninterrupted views across the rolling fairways and countryside. Situated within the picturesque grounds of Caldecott Hall, residents enjoy access to first-class leisure facilities and a neighbouring golf course.

Directions





Floor plans

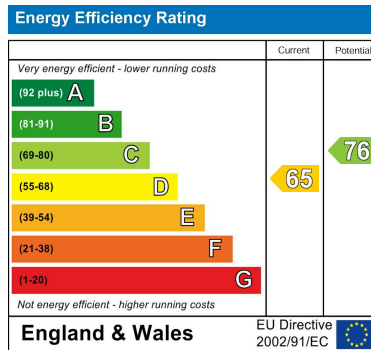
GROUND FLOOR
552 sq.ft. (51.3 sq.m.) approx.

1ST FLOOR
694 sq.ft. (64.5 sq.m.) approx.



TOTAL FLOOR AREA: 1247 sq.ft. (115.8 sq.m.) approx.

Whilst every attempt has been made to ensure the accuracy of the floorplan contained here, measurements of doors, windows, rooms and any other items are approximate and no responsibility is taken for any error, omission or mis-statement. This plan is for illustrative purposes only and should be used as such by any prospective purchaser. The services, systems and appliances shown have not been tested and no guarantee as to their operability or efficiency can be given.
Made with Metropix ©2025



10 New Market

Beccles

Suffolk

NR34 9HA

01502 712122

infobeccles@durrants.com

<https://durrants.com/>